

www.ianbfoto.com



ZENZA
BRONICA

SQ/SQ-A



THE ULTIMATE IN MEDIUM FORMAT CAMERAS— THE PROFESSIONAL CLASS ZENZA BRONICA SQ-A SINGLE LENS REFLEX.

Bronica believes that a new concept is required in the relation between the photographer and camera, due to the diversification and individualism taking place in the portrayal of the photographic image. In other words, the photographer and camera must be able to work together, as a photographer-camera team, towards the same purpose, that of taking pictures meeting the highest requirements. The Bronica SQ-A has been newly developed, with this concept in mind, and is a single lens reflex camera system of the 6×6cm format, based on the Bronica SQ, but incorporating great improvements in the system and camera itself. The new Bronica SQ-A is considered to be a complete fusion of the Bronica medium format technology with modern camera electronics, with systematic coupling between camera body and accessories giving the photographer a very wide choice of operational controls, such as manual exposure control, as well as completely automatic exposure control. Furthermore, there are exclusive Bronica technologies throughout the system, such as electronic control lens shutter with electronic flash synching at all shutter speeds. Viewfinders, lenses and focusing screens can be interchanged to match specific requirements. A long Bronica tradition, film back interchangeability, is also available, as well as mirror lock-up. In fact, the SQ-A simply abounds with features designed for the professional user or features which have been incorporated so that the professional can use the SQ-A for the ultimate goal of taking pictures meeting the highest standards of the photographic world.





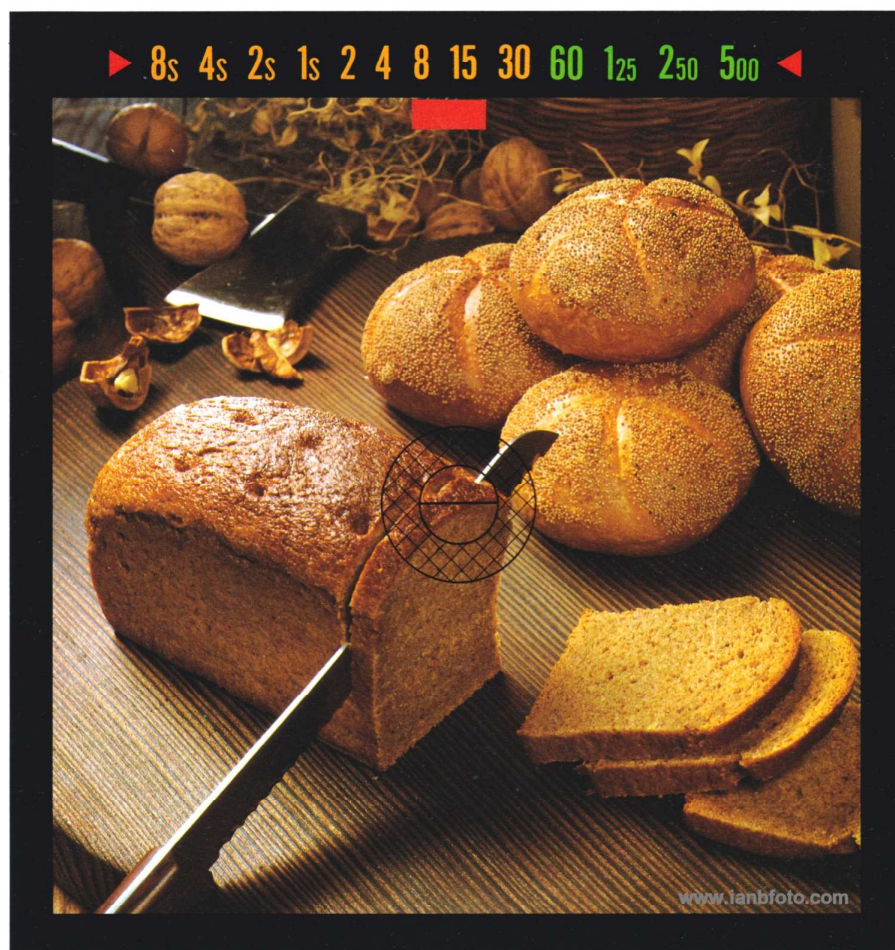
AE OR MANUAL— THERE'S A FINDER TO MATCH THE REQUIREMENT.

Bronica SQ-A— Diaphragm-Priority AE with Thru-The-Lens Metering.

The AE Prism Finder S converts the Bronica SQ-A into a fully automatic camera, with through-lens metering and diaphragm-priority AE operations. A light pressure on the shutter button displays the shutter speed for the aperture selected and when fully stroked automatically controls the shutter speed, in stepless stages, for obtaining the proper exposure. The electronic computer system takes over troublesome exposure calculations and frees the photographer for the most important task—that of taking the picture. And, Bronica has incorporated the AE system in the finder so that it can always be detached for using the body without automation. But, it's always possible to switch back to manual operations, with through-lens coupled metering, without even removing the finder, which lets the user move freely from one mode to the other. In other words, the AE Prism Finder S gives the Bronica SQ-A action-following capability equaling the 35mm single lens reflex.

The finder is important for properly composing and focusing the subject but Bronica have also included photocells in the finder for measuring the exposure through the lens. Thus, there is diaphragm-priority AE, when the AE Prism Finder S is used, or TTL-metered manual

operations when ME Prism Finder S or MF Finder S is attached. The user can choose eye-level or waist-level type finders, with the type of exposure control system and view-focusing best suited to the subject matter.

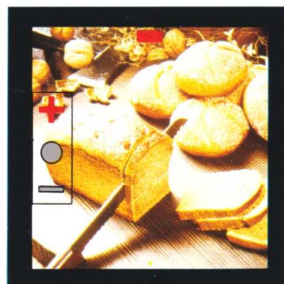


AE Prism Finder S

Meter-Coupled Manual Operations

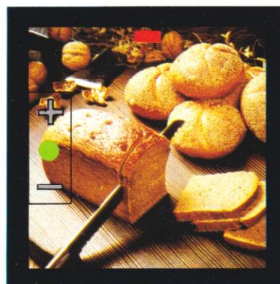
ME Prism Finder S and MF Finder S provide through-lens, match-LED, CdS metering, cross-coupling to both shutter speed and aperture, thus giving the photographer even greater freedom in exposure controls, with the shutter speed dial on the finder overriding the dial on the body. Exposure is adjusted while checking the green/red LED symbols in the finder, which indicate correct exposure or show over- and under-exposure.

MF Finder S



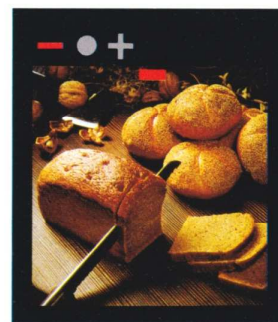
• Over-Exposure

MF Finder S



• Correct Exposure

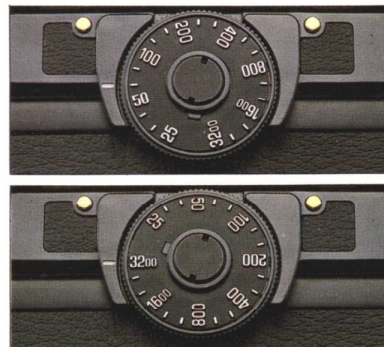
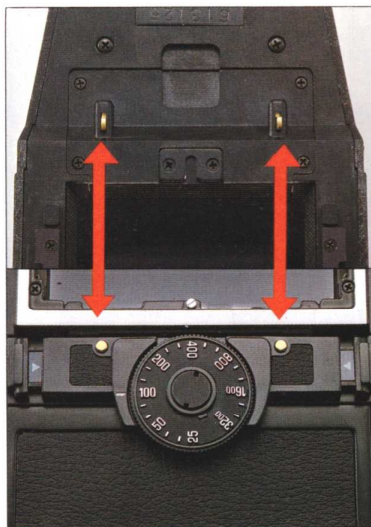
ME Prism Finder S



• Under-Exposure

Automatic Coupling Film Speed Dial

The electronic circuitries of body and accessories are interconnected, when these sections are attached, which produces a compound "system effect", as seen when the finder is attached. When through-lens metering finders are attached on the body, there is automatic coupling with the ASA/ISO film speed dials of the film backs which frees the user from the need to make adjustments when film backs are exchanged. This exclusive Bronica system means that different films can be used freely by professionals, with great convenience and ease.



The ASA/ISO film speed dial is set for the film sensitivity of the film loaded in the film back. The dial click-stops at 1/3rd increments and may also be used for making exposure compensations.

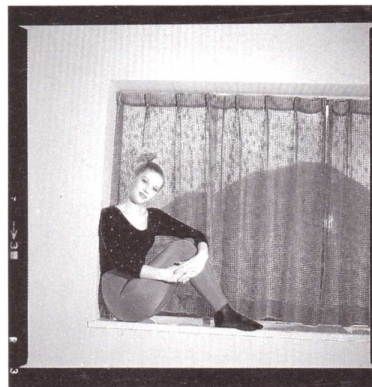
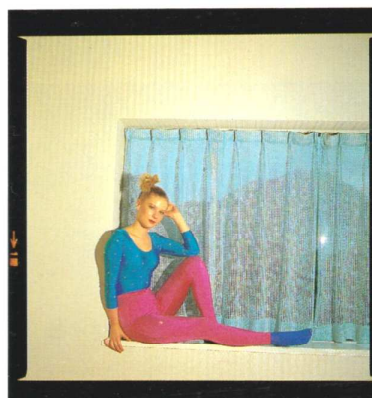
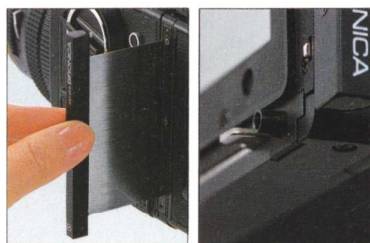


Complete Film Back Interchangeability— With Auto-Coupling Film Speed Dials.

A traditional Bronica feature of film back interchangeability now accepts 135 cartridge film with frame sizes of 24 × 36mm and 24 × 54mm in addition to 120/220 roll film plus Polaroid pack films. The film back can be interchanged freely, even in mid-roll and in daylight which means that various types of films can be used intermixed, as long as there are enough extra film backs. Since each film back has its exclusive ASA/ISO film speed dial, it's only necessary to set the film speed to each film back upon loading film, to keep track of the film being used. Even when through-lens metering finders are used, there will be no need to readjust film speeds because this data will be transmitted automatically by the film back, upon attachment of the finder. Film Back SQ 120, Film Back SQ 220, Polaroid Film Back S and Film Back SQ 135 (frame sizes of 24 × 36mm and 24 × 54mm with different Cartridge Holders) are available.

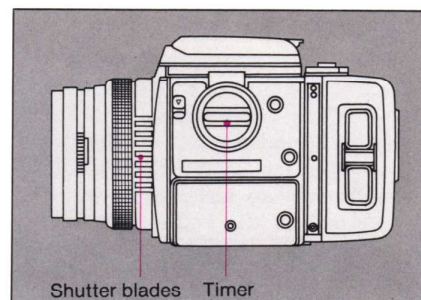
Built-in Safety Features

Various safety features are incorporated for maximum protection during film back exchanges and film loading. The film back cannot be removed without, first, inserting a dark slide for making the film back light-tight and the shutter cannot be released without removing the dark slide. And, the film backs have double release buttons which must be squeezed together at the same time for opening the back cover.



ELECTRONIC-CONTROL LENS SHUTTER, WITH SYNCHING AT ALL SPEEDS UP TO 1/500 SECOND.

The electronic flash is a very important tool for the modern photographer because of its extremely short flash duration and fast recycling time, and the lens shutter is the ideal medium for it. Differing from the focal plane shutter, which is limited to 1/60 to 1/125 sec. synching speeds, the lens shutter synches at all shutter speeds, up to the fastest 1/500 sec., because the leaf shutter opens fully at all speeds. This makes it the ideal tool for daylight flash fill-in shots, as well as for shooting a fast-moving model in the studio, especially as there is a free choice of speeds and apertures for matching the mood.



The Ultimate in Lens Shutter Systems.

The lens shutter system has been developed jointly by Seiko and Bronica, based on the latest "mechatronic" (mechanical-electronic) technology, and provides professionals with a highly accurate shutter control system in which the leaf shutter is

incorporated in each lens and the electronic control circuit is built into the camera body, with automatic coupling upon attachment. There is very stable performance at all shutter speeds from 8 to 1/500 sec., which are electronically-controlled plus a mechanically-controlled 1/500 second, without image distortion because the leaf shutter opens fully at all speeds.



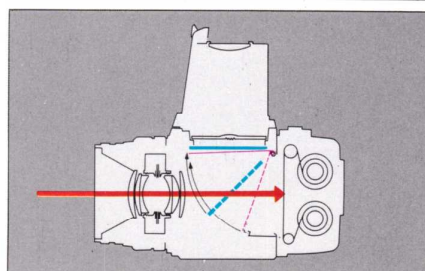
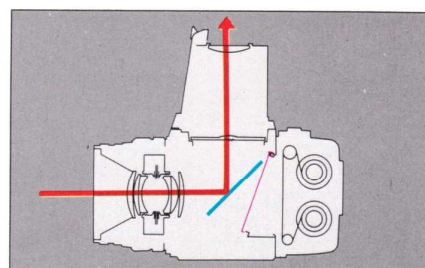
BUILT-IN MIRROR LOCK-UP SYSTEM FOR COMPLETE PREVENTION OF MIRROR SHOCKS.

One of the chief attractions of the 6×6 format is the large negative size and the resulting overall image quality, which is traceable to their sharpness, resulting from sharpness of the interchangeable lenses, flatness of the film plane, stability in camera handling, etc.

And, mirror lock-up also contributes towards sharper pictures. The mirror can be locked up, first, and the shutter released at the proper moment. This will prevent vibrations from the mirror action, with only a quiet lens shutter action taking place. Mirror lock-up will also prove valuable for slow shutter speeds in studio work, for close-up work, for macrophotography and long telephoto work.



The mirror lock-up lever has 3 settings, or N, S and C. N (normal) is for shooting without lock-up. S (single frame) is for shooting a single frame with mirror lock-up and C (continuous) means that the mirror will be locked up continuously until returned to normal.



Studio Photography

SQ-A body, Zenzanon-S 150mm lens, Waist-Level Finder S and Professional Lens Hood S.

A simple but ideal combination for studio work. An ideal lens for portraiture and an effective lens hood for studio lighting.



Snap-Shooting

SQ-A body, Zenzanon-S 40mm lens and Prism Finder S.

An ultra wide-angle lens and eye-level finder with laterally-correct erect image for speedy shooting of fast-breaking action.

Macrophotography

SQ-A body, Zenzanon-S 105mm lens, MF Finder S and Automatic Bellows Attachment S. Macrophotography with full AE operations and excellent image quality even at very close shooting distances are possible.

SQ-A Action System

SQ-A body, Zenzanon-S 80mm lens, AE Prism Finder S, Speed Grip S and Focusing Lever S.



The above is an easy-operating, effective set-up for the SQ-A. The right hand is used for lever-winding (shutter cocking and film winding) and shutter release actions. The left for speed focusing. And the eye-level finder shows a laterally-correct erect image and provides full AE operations for using the SQ-A at its best.

Telephoto Photography

SQ-A body, Zenzanon-S 500mm and ME Prism Finder S.

The 500mm lens can be hand held for long shots in outdoor sports but can also be used as a 1000mm lens with Tele-Converter S 2X.

The Zoom Set-Up

SQ-A body, Zenzanon-S Variogon 140-280mm Zoom, AE Prism Finder S and Speed Grip S. Zooming action equaling smaller cameras with full AE operations, lever winding on Speed Grip S and eye-level view-focusing.



ZENZANON-S SERIES INTERCHANGEABLE LENSES— WITH INDIVIDUAL LENS SHUTTERS AND GREAT SHARPNESS



● ZENZANON-S 40mm F4



● ZENZANON-S 50mm F3.5



● ZENZANON-S
80mm F2.8



● ZENZANON-S 105mm F3.5



● ZENZANON-S 150mm F3.5



● ZENZANON-S 200mm F4.5



● ZENZANON-S 250mm F5.6

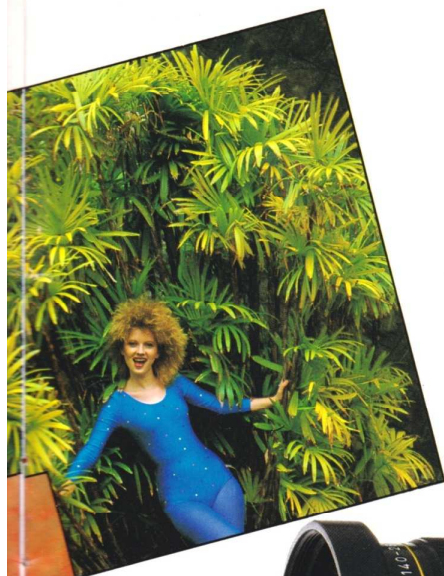


● Tele-Converter S 2X



Zenzanon-S Series Lenses— With 6 Gold-plated Terminals.

Zenzanon-S interchangeable lenses, from 40mm to 500mm, are noted for their great resolving power and superior image quality. Their natural color reproduction and superb color balance are widely acclaimed by professionals. The lens is attached by simply rotating it until locked into place. The lens is removed by simply depressing the release button and rotating the lens. And, the six electrical terminals on the lens, which match those on the body mount, show that the Zenzanon-S lenses incorporate a revolutionary electronic control system.







● ZENANON-S VARIOZON ZOOM
75 ~ 150mm F4.5



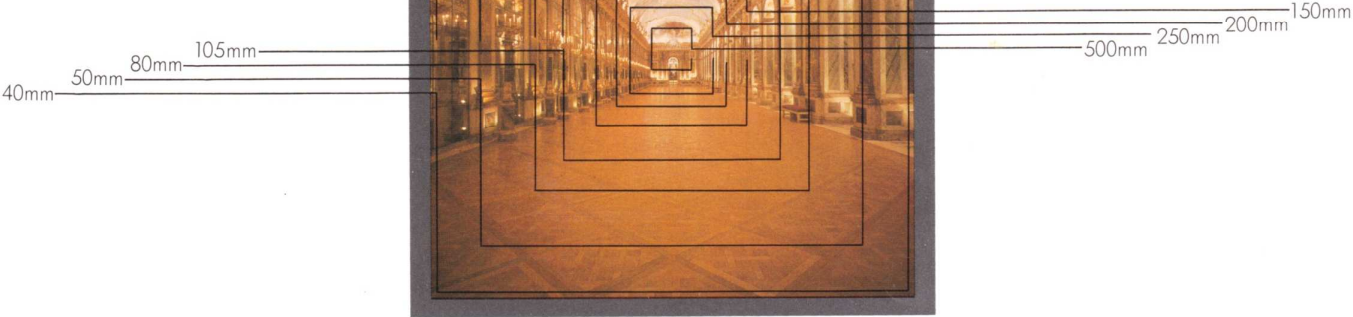
● ZENANON-S VARIOZON ZOOM
140 ~ 280mm F5.6



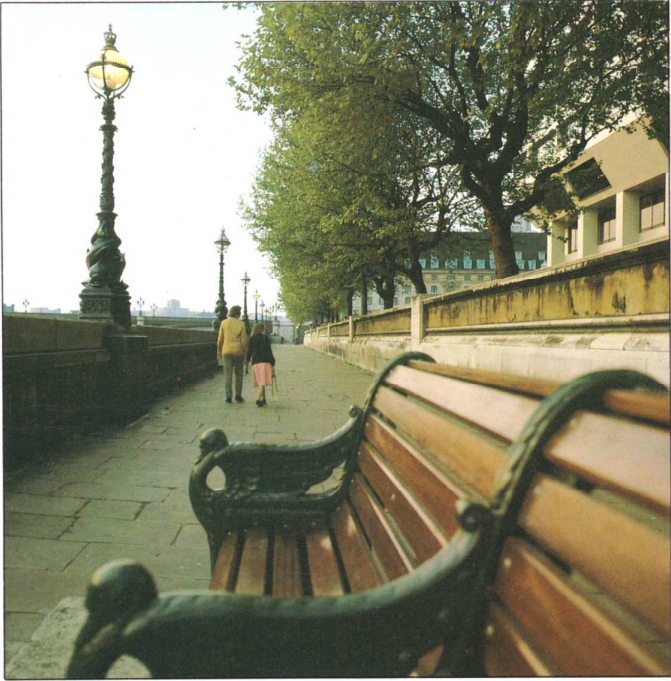
● ZENANON-S 500mm F8

Zenanon-S	40mm F4	50mm F3.5	80mm F2.8	105mm F3.5	150mm F3.5	200mm F4.5	250mm F5.6	500mm F8	Zenanon-S Variozon Zoom	
									75 ~ 150mm F4.5	140 ~ 280mm F5.6
No. of group— element	8—11	8—10	4—6	4—6	5—5	5—5	5—5	6—7	13—15	14—17
Angle of view	87°	76°	51°	41°	30°	22°30'	18°	9°	53°30' ~ 30°06'	30°42' ~ 16°12'
Apertures	4 ~ 22	3.5 ~ 22	2.8 ~ 22	3.5 ~ 22	3.5 ~ 22	4.5 ~ 32	5.6 ~ 32	8 ~ 45	4.5 ~ 32	5.6 ~ 32
Min. focusing distance (m)	0.4	0.5	0.8	0.85	1.5	2.5	3	8.5	1.8; 0.25 in macro mode; area covered 24.6 × 24.6cm	2.5; 0.76 in macro mode; area covered 32.5 × 32.5cm
Filter size (mm)	95	67						95	Series 9a (93mmφ)	
Size (L × mmφ)	83 × 102	62 × 82	52 × 82	60 × 82	61 × 82	97 × 82	129 × 82	255 × 102	152 × 100	221 × 94
Weight (gram)	660	560	470	540	590	740	870	1,890	1,800	2,000
Lens hood	Built-in							Built-in	With Filter retainer & lens hood	
Lens case	Lens pouchette Type 1				Lens pouchette Type 3			Lens case	With lens case	With lens case
Equivalent focal length in 35mm format camera (mm)	21	28	45	58	85	105	135	280	40 ~ 80	75 ~ 150

Angles of View for
Zenzanon-S Lenses



40mm 50mm
150mm 500mm



FINDERS



AE Prism Finder S

Specially-developed prism finder shows bright laterally-correct erect image and provides diaphragm-priority AE operations through the lens, with LED-illuminated shutter speed shown above focusing screen with half-stroke of shutter release button. Power taken from SQ-A body, when attached. * Exclusive for SQ-A.

- Magnification: 0.75X (with standard 80mm lens)
- Finder field: 52.3 x 52.3mm (94% x 94%)
- Exposure measurements: TTL full aperture, with 2 silicon photocells; full area average reading; EV4 ~ EV17 (at ASA/ISO 100)
- Film speed range: ASA/ISO 25 ~ 3200
- Shutter range: 8 ~ 1/500 sec. (in stageless steps on Auto)
- Finder indications: Color-coded LED digital display of shutter speeds in yellow (8S ~ 1/30 sec.), green (1/60 ~ 1/500 sec.) and red (over- and under-exposure warnings) over screen area.
- AUTO/MANUAL switch: AUTO—AE circuit automatically controls shutter speed, with LED display in finder; MANUAL—AE and body control circuits operate independently, with blinking LED display of recommended shutter speed.
- Magnifier: -1.5 dptr supplied; can be exchanged for magnifier in -4.5 to +1.5 dptr range.
- Size: 72 x 134 x 61mm • Weight: 380 grams



ME Prism Finder S

Prism finder for TTL manual exposure controls, coupled to the shutter speed dial on finder and aperture ring of lens, with green (•) LED display for proper exposure and red (+, -) LED displays for over- or under-exposure warning appearing over focusing screen area.

- Magnification: 0.75X (with standard 80mm lens)
- Finder field: 52.3 x 52.3mm (94% x 94%)
- Exposure measurements: TTL full aperture, with 2 CdS cells; full area average reading; EV4 ~ EV16 (at ASA/ISO 100)
- Film speed range: ASA/ISO 25 ~ 3200
- Shutter range: 8 ~ 1/500 sec. (in 1/2 stop increments)
- Finder display: Color-coded 3 LED display of proper exposure (• green) and over- and under-exposure (+, - red) over screen area.
- Magnifier: -1.5 dptr supplied; can be exchanged for magnifier in -4.5 to +1.5 dptr range.
- Size: 78.5 x 134 x 61mm • Weight: 390 grams

Interchangeable Magnifiers for Finders

Interchangeable magnifiers are available for replacement with the standard magnifier supplied. Therefore, choose one to suit the user's eyesight.



MF Finder S

Waist-level finder for TTL match-LED exposure control (same as ME Prism Finder S) and an adjustable magnifier with -3 to +2 dptr range. Use for low-angle shooting, close-ups, copying work, etc., requiring careful composition.

- Magnification: 1.0X (with standard 80mm lens)
- Finder field: 52.3 x 52.3mm (94% x 94%)
- Exposure measurements: TTL full aperture, with 2 CdS cells; full area average reading; EV4 ~ EV16 (at ASA/ISO 100)
- Film speed range: ASA/ISO 25 ~ 3200
- Shutter range: 8 ~ 1/500 sec. (in 1/2 stop increments)
- Finder display: Color-coded 3 LED display of proper exposure (• green) and over- and under-exposure (+, - red) on left side of screen.
- Magnifier: Adjustable; -3 to +2 dptr range.
- Size: 80 x 83 x 79mm • Weight: 200 grams



Prism Finder S

Total reflection eye-level prism finder shows large, bright laterally-correct upright image. Compact, light-weight finder has high eyepoint, allowing eyeglass users to see field from edge to edge. Use with Speed Grip S for equaling 35mm handling action.

- Magnification: 0.75X (with standard 80mm lens)
- Finder field: 52.3 x 52.3mm (94% x 94%)
- Magnifier: -1.5 dptr supplied; can be exchanged for magnifier in -4.5 to +1.5 dptr range.
- Size: 71 x 134 x 56mm • Weight: 310 grams



Waist-Level Finder S

Distinct images produced with high - powered magnifier and effective screening of ambient light.

- Magnification: 1.15X (with standard 80mm lens); (magnifier magnification is 3.6X)
- Finder field: 52.3 x 52.3mm (94% x 94%)
- Magnifier: -1.5 dptr supplied; can be exchanged for magnifier in -4.5 to +1.5 dptr range.
- Size: 70 x 75 x 15mm • Weight: 115 grams

- Power of magnifiers: -4.5D; -3.5D; -2.5D; -1.5D (standard); -0.5D; +0.5D; +1.5D.
- Types of magnifier: Exclusive type for Waist-Level Finder S; common type for AE Prism Finder S, ME Prism Finders S and Prism Finder S.

FILM BACKS



Film Back SQ 120/Film Back SQ 220/Film Back SQ 135

Exclusive film backs for 120 and 220 roll films as well as 135 cartridge film (24 x 36 & 24 x 54mm frame sizes) with improved film flatness. Full coupling with body, with body winding crank advancing film. Double exposure and blank exposures prevented. Film back not detachable without inserting dark slide. Shutter release not possible with dark slide inserted. Automatic coupling with finder meter circuit when ASA/ISO dial is set for film loaded in film back.

- Size: 90 x 47 x 91mm
- Weight: 380grams (SQ 120/SQ 220)
495grams (SQ 135)



Polaroid Film Back S

Developed with the Polaroid Corp. for instant color or black-and-white prints. ASA/ISO switch couples to circuit of finders with built-in exposure meters.

- Size: 165 x 28 x 109mm • Weight: 350 grams

Film Type	B & W or Color	Print Size (mm)	ASA/ISO	Developing Times (24°C)
665	B & W/negative	85 x 108	75	30 seconds
667	Black-and-white	85 x 108	3000	30 seconds
668	Color	85 x 108	75	60 seconds
107	Black-and-white	85 x 108	3000	15 seconds
108	Color	85 x 108	75	60 seconds
87	Black-and-white	82 x 86	3000	30 seconds
88	Color	82 x 86	75	60 seconds

• 8 exposures per pack for each type of film.

HAND GRIP



Speed Grip S

Provides the SQ and SQ-A with fast handling action, equal to 35mm cameras. Has film winding lever for shutter cocking and film winding, as well as shutter release and hot shoe.

AUTOMATIC BELLOWS ATTACHMENT S



Everyday subjects become works of art when captured on the 6×6 format in close-ups, where photographic magnification is of prime importance. The accessory allows continuous magnification changes from 0.64x to 1.98x, with 80mm lens, with automatic coupling of lens shutter and lens diaphragm actions. And, the Zenzanon-S 105mm lens is recommended because it has been designed for optimum performance even at close focusing distances, while the AE Prism Finder S will provide full exposure automation. (Available from around June 1982.)

Zenzanon-S	Magnification	Area Covered Length of One Side (cm)	Focusing Distance (cm)	Exposure Factor
50mm	1.05 ~ 3.18	5.30 ~ 1.75	24.1 ~ 31.7	2.5 ~ 7.5
80mm	0.64 ~ 1.98	8.72 ~ 2.81	34.5 ~ 36.8	2.4 ~ 7.6
105mm	0.51 ~ 1.65	10.9 ~ 3.38	45.6 ~ 43.3	2.3 ~ 7.1
150mm	0.36 ~ 1.17	15.4 ~ 4.76	75.3 ~ 58.9	2.4 ~ 7.6
200mm	0.27 ~ 0.88	20.6 ~ 6.33	120.9 ~ 82.3	2.4 ~ 7.6
250mm	0.22 ~ 0.73	25.6 ~ 7.59	172.7 ~ 106.3	2.1 ~ 6.4

● Value at time of minimum and maximum extensions of lens and bellows.

AUTO EXTENSION TUBE S S-18-S-36



These tubes provide different magnifications for Zenzanon-S lenses (40mm to 250mm), without loss of automatic diaphragm action in close-up shooting.

Lenses	S-18				S-36			
	Magnification	Area Covered (cm)	Focusing Distance (cm)	Exposure Factor	Magnification	Area Covered (cm)	Focusing Distance (cm)	Exposure Factor
80mm	0.22	25.7 × 25.7	56.4	1.4	0.43	12.8 × 12.8	39.0	1.9
	0.36	15.6 × 15.6	42.5	1.7	0.57	9.7 × 9.7	35.4	2.3
40mm	0.43	12.8 × 12.8	25.1	1.4	0.87	6.4 × 6.4	22.1	2.0
	0.62	8.9 × 8.9	23.0	1.7	1.06	5.3 × 5.3	22.0	2.2
50mm	0.36	15.6 × 15.6	30.0	1.4	0.71	7.8 × 7.8	24.7	1.9
	0.51	10.9 × 10.9	26.5	1.6	0.87	6.4 × 6.4	24.2	2.2
105mm	0.17	32.2 × 32.2	82.0	1.4	0.35	16.1 × 16.1	53.6	1.8
	0.35	15.8 × 15.8	53.1	1.8	0.52	10.6 × 10.6	45.1	2.3
150mm	0.12	45.4 × 45.4	151.0	1.4	0.24	22.7 × 22.7	92.8	1.9
	0.25	22.3 × 22.3	91.8	1.9	0.37	14.9 × 14.9	74.2	2.4
200mm	0.09	60.7 × 60.7	259.0	1.4	0.18	30.4 × 30.4	154.0	1.9
	0.19	29.0 × 29.0	149.0	1.9	0.28	19.6 × 19.6	118.0	2.5
250mm	0.07	75.4 × 75.4	388.0	1.3	0.15	37.7 × 37.7	224.0	1.7
	0.18	31.0 × 31.0	196.0	1.9	0.25	22.0 × 22.0	158.0	2.3

CLOSE-UP LENS S No.1 • No.2



Provides simple close-up shooting when screwed on front of lens, either independently or together. Available individually. Focal lengths are 67cm (No.1) and 37.7cm (No.2).

Zenzanon-S	No.1		No.2		No.1 + No.2	
	Magnification	Area Covered (cm)	Magnification	Area Covered (cm)	Magnification	Area Covered (cm)
50mm	0.08 ~ 0.21	73.7 ~ 25.9	0.15 ~ 0.29	36.7 ~ 19.3	0.22 ~ 0.36	24.7 ~ 15.6
80mm	0.12 ~ 0.26	44.8 ~ 21.4	0.25 ~ 0.39	22.3 ~ 14.3	0.37 ~ 0.51	15.0 ~ 10.9
105mm	0.16 ~ 0.33	35.7 ~ 16.8	0.31 ~ 0.50	17.8 ~ 11.1	0.46 ~ 0.66	12.0 ~ 8.4
150mm	0.22 ~ 0.37	25.3 ~ 15.1	0.44 ~ 0.62	12.6 ~ 9.0	0.65 ~ 0.85	8.5 ~ 6.5
200mm	0.29 ~ 0.42	19.0 ~ 13.2	0.59 ~ 0.75	9.4 ~ 7.4	0.87 ~ 1.07	6.4 ~ 5.2
250mm	0.36 ~ 0.51	15.3 ~ 10.8	0.73 ~ 0.93	7.6 ~ 6.0	1.09 ~ 1.33	5.1 ~ 4.2

● Area covered is indicated by length of one side of a square.

TELE-CONVERTER S 2X



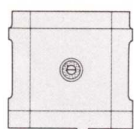
Focal length of prime lens is doubled by simply inserting between lens and SQ/SQ-A body. Focal lengths not available in Zenzanon-S Series are thus provided. And, since there is no change in the minimum focusing distance, close-up capability is also increased.

- Magnification: 2X
- Lens construction: 6 elements in 5 groups (multi-coated)
- Lens diaphragm/metering: Fully coupled upon attachment.
- Exposure factor: 4X (2 f/stops)
- Size: 53 × 84mm
- Weight: 500 grams

In Combination with Prime Lens

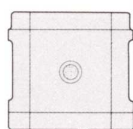
- Focal length: Double prime lens.
- Apertures: F2.8 ~ F4.5, with automatic lens diaphragm action.
- Magnification: Double prime lens.
- Depth of field: 1/2 prime lens.
- Minimum focus: Same as prime lens.
- For use with 80, 105, 150, 200, 250 and 500mm lenses only.

FOCUSING SCREEN S



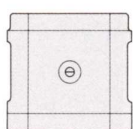
Microprism/Split-Image (standard)

Split-image spot with microprism ring; for general use.



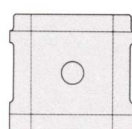
Microprism

Microprism spot for subjects without strong lines. Full area matte.



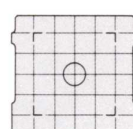
Split-image

Central split-image spot; suitable for subjects with vertical lines.



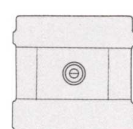
Matte

Central matte spot. For general use. Also, slow lenses/small apertures.



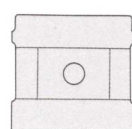
Grid-lines

Central matte spot and overall grid-lines. For composition work.



Microprism/Split-Image

For Film Back SQ 135 with 24 × 36mm and 24 × 54mm format size.



Matte



Professional Lens Hood S

Adjustable extensions, up to 46mm, for cutting distracting glare and reflections.

- For use with 50, 80, 105, 150, 200 and 250mm lenses.
- Filters: Screw-in 67mm glass filter and 75mm sq. gelatin filter.
- Size: 128 × 143 × 80mm
- Weight: 230 grams



Remote Camera Battery Pack E

For keeping battery under cover in freezing temperature, when battery performance drops, with cord connection to the camera.



Focusing Lever S

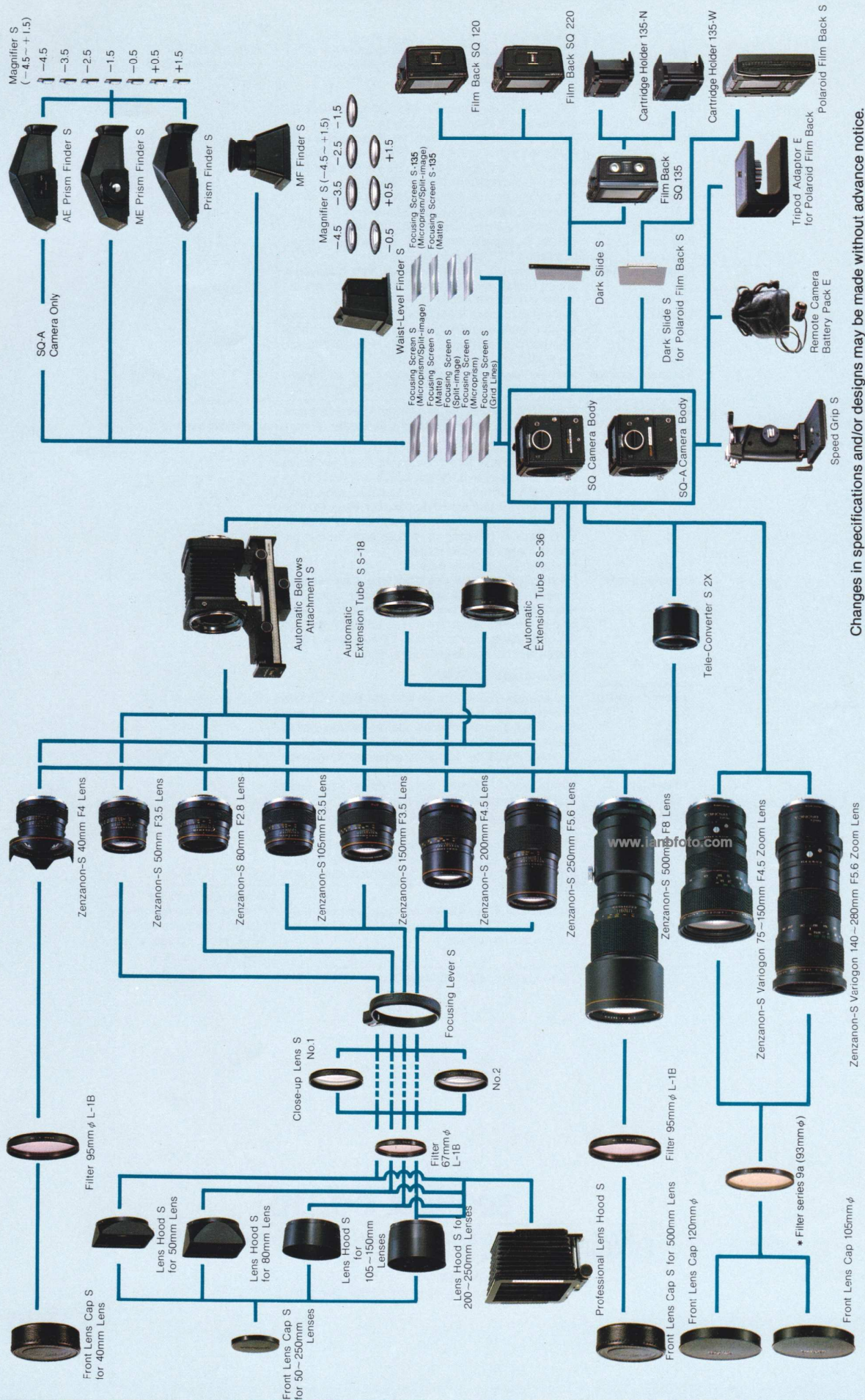
For speedy, smooth focusing action when placed over the focusing rings of the 50, 80, 105, 105, 200 and 250mm Zenzanon-S lenses.



Tripod Adapter E (For Polaroid Film Back)

For use on large tripod heads, when using the Polaroid Film Back S, in order to raise the large Film Back above the tripod head face.

ZENZA BRONICA SQ/SQ-A SYSTEM



Changes in specifications and/or designs may be made without advance notice.
The item marked by an asterisk (*) is available from B+W, West Germany or other manufacturers.

Specifications of the ZENZA BRONICA SQ/SQ-A

● SQ-A		● SQ
Type	6cm x 6cm format lens shutter single lens reflex camera, with interchangeable lens, film back, finder and focusing screen systems.	Same as SQ-A except where noted below
Frame size	55.6mm x 55.6mm	
Film	120 roll film (12 exposures) and 220 roll film (24 exposures), with exclusive film backs.	
Standard lens	Zenzanon-S 80mm F2.8 lens; interchangeable type; 6 elements in 4 groups; multi-layer anti-reflection coated; 51° angle of view; F22 minimum aperture; helical focusing from infinity to 80cm.	
Filter size	67mm diameter on 50mm to 250mm lenses; 95mm diameter on 40mm lens and 500mm lens.	
Lens mount	Exclusive four-claw Bronica SQ bayonet mount.	
Focusing	Helical focusing system built into each lens; angle of rotation 171° for standard lens.	
Lens diaphragm	Fully automatic instant reopening lens diaphragm action; equal-distant aperture scale graduations; depth of field previewing.	
Shutter	Electronic control SEIKO #0 between-lens leaf shutter; shutter speeds 8 sec. to 1/500 sec., without intermediate settings, plus T (time exposure); mechanical control 1/500 second.	
Multiple exposure	Multiple exposure possible with lever on camera body.	
Mirror lock-up	Mirror lock-up possible with switch lever on the side of camera body for single or continuous picture taking.	No Mirror lock-up
Film back	Daylight loading interchangeable type; exclusive backs for 120 (12 exposures), 220 (24 exposures) roll films, 135 cartridge film and Polaroid pack films; with ASA/ISO film speed dial on Film Back SQ 120/220/135 and ASA film speed switch on Polaroid Film Back S coupling to finders with built-in exposure meter, when attached.	
Finder	Interchangeable finder system.	
Focusing screen	Interchangeable type; standard type, supplied with camera has split-image rangefinder spot surrounded by microprism ring and full-area matte screen. Optional types are (1) central matte spot, (2) full-area matte with grid-lines, (3) microprism spot and (4) split-image rangefinder spot.	
Flash synchronization	X-setting (up to 1/500 sec.)	
Battery checking	Red-colored LED lights up at front end of finder, outside screen area, when battery check button is depressed; also doubles as shutter closing signal.	
Battery	Single 6-volt silver oxide battery (Eveready No.544, Duracell PX-28 or 4G13) or alkaline manganese battery (4LR44 or A544).	
Dimensions	92mm wide x 109mm high x 179mm long (with standard lens and waist-level finder).	
Weight	1,500 grams (with standard lens and waist-level finder) 915 grams SQ-A camera body w/Film Back SQ 115 grams Waist-level finder S 470 grams Zenzanon-S 80mm lens	
Remarks	Attachment of the AE Prism Finder S converts the SQ-A into a TTL diaphragm-priority automatic exposure control camera.	Attachment of the MF Finder S and/or ME Prism Finder S converts the SQ/SQ-A into a manual exposure control camera.

Changes in specifications and/or designs may be made without advance notice.



BRONICA CO., LTD.

2-11 Shin-Ogawamachi Shinjuku-ku, Tokyo 162, Japan
Telephone: Tokyo (03) 267-0211
Cable Address: "BRONICA TOKYO"
Telex Call No. 0232-2096 BRONC J